

Important Numbers

Emergency

- Suicide Hotline: 1-800-273-8255 / 1-800-799-4889 (TTY)
- Mobile Crisis Response Team: 727-372-4357
- Crisis Text Line: Text HOME to 741741
- Florida Domestic Violence Hotline: 1-800-500-1119
- Florida Abuse Hotline: 1-800-962-2873

Clothing

- Framworkers Self-Help: 352-567-1432
- Neighborhood Care Center: 813-780-6822

Food

- Meals on Wheels for Kids: 813-344-5837
- Salvation Army East Pasco: 352-521-3126
- Food Stamps: 866-762-2237
- WIC: 352-521-1450 (Dade City)/ 813-780-0740 (Zhills)

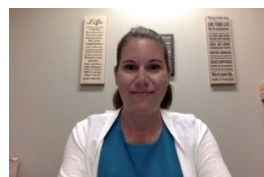
Housing / Shelters

- Sunrise of Pasco DV Shelter: 352-521-3120
- Pasco Housing Authority: 352-567-0848
- Metropolitan Ministries: 727-756-1955
- Restored Hope: 352-437-4815
- Pasco County Social Services: 352-521-5173

Other

- Bay Area Legal Services: 352-567-9044
- Resource Hotline: 211 / 1-877-828-8929

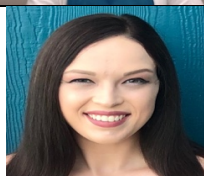
Student Support Staff



Ms. Roberts

School Counselor

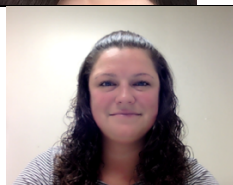
kr Roberts@pasco.k12.fl.us



Ms. Buchanan

School Counselor

kbuchana@pasco.k12.fl.us



Mrs. Taylor

School Nurse

edtaylor@pasco.k12.fl.us



Ms. Remarais

School Social Worker

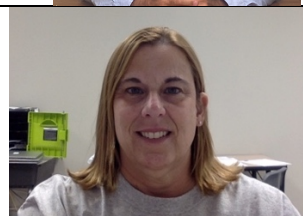
bremarai@pasco.k12.fl.us



Mr. Hammen

School Psychologist

jhammen@pasco.k12.fl.us



Mrs. Rulison

Graduation Enhancement Coach

kpayne@pasco.k12.fl.us



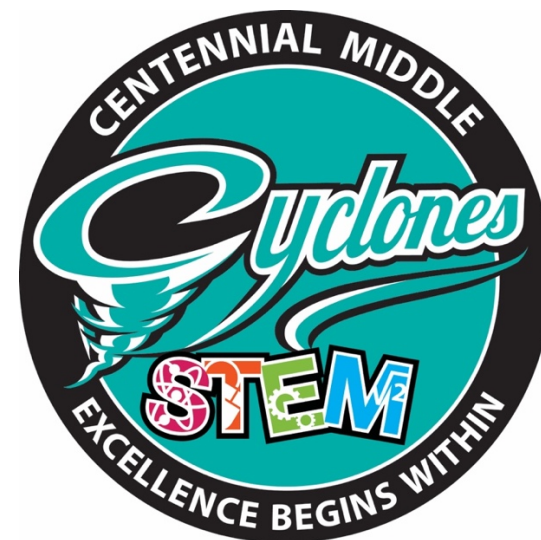
Ms. Brooks

Social Services Coordinator

sabrooks@pasco.k12.fl.us

CENTENNIAL MIDDLE

Student Support Services



38505 Centennial Rd.
Dade City, FL 33525

(352) 524-9700

cenms.pasco.k12.fl.us

Principal: Dr. Saylor

School Counselor

Ways Counselors Can Assist You:

- Assist all students in academic, career, and personal/social development
- Provide all students with the skills needed to reach their highest potential to achieve college, career, and life readiness
- Encourage students to plan, monitor and manage learning, personal/social, and career development
- Facilitate student-centered / student-directed practices
- Collaborate with parents and teachers to support students develop, analyze, and evaluate educational, occupational, and personal/social plans

School Social Work / Social Services Coordinator

Ways Social Workers Can Assist You:

- Student Evaluations / Social Developmental Histories / FBAs / Eligibility Staffing
- Student Observation
- Threat Assessments / Suicide Assessments
- Attendance Intervention Plans / Attendance Remediation
- Truancy Referrals / YFA Case Staffing
- Crisis Intervention
- Individual Counseling / Group Counseling
- Mental Health Referrals
- Community Agency Referrals
- Housing / Homelessness / (SIT) Referrals
- Holiday Assistance
- Financial Assistance
- Food Assistance
- Clothing / Shoes Assistance
- Home Visits
- ABC Program

School Psychology

Ways Psychologists Can Assist You:

- Academic / Behavior interventions and support
- Data collection and analysis
- Student progress monitoring
- Research and program evaluation
- Evaluations for Exceptional Student Education Services
- Instructional support
- Student assessments
- Response to interventions
- Consultations
- Mental health support
- Student mentoring

Student Support Assistance Program

Ways Graduation Enhancement

Coaches Can Assist You:

- Provide academic advisory services
- Monitor student's academic performance and attendance
- Special pull-out program / Course recovery

“Education is the most powerful weapon which you can use to change the world.”

-Nelson Mandela

School Nurse

Ways Nurses Can Assist You:

- Serve as a liaison between school personnel, family, community, and medical providers
- Provide community health referrals
- perform health screenings
- Perform Suicide & Threat Assessments
- Member of Section 504 Committee
- Provide supervision and direction to clinic assistants, licensed practical nurses, and other trained staff
- Assist with developing IEPs
- Evaluations for Exceptional Student Education Services